

SINGLE DISC

EXCEL

Agriculture



SINGLE DISC
Farming for the Future

BENEFITS OF EXCEL'S NO-TILL DISC SEEDING

- Retain stubble
- Trash handling and summer weed handling
- Constant depth seed placement
- Smoother finish in paddock
- Reduced tillage
 - = reduced soil disturbance
 - = lower weed germination
- Lower draft requirements
 - = lower hp
 - = less fuel
- Higher sowing speeds
 - = greater productivity
- Avoid clumping of straw in paddocks
- Minimised blockages of sowing machinery due to trash build-up
- Improve water use efficiency in irrigated crops such as rice
- Reduce crop damage in rice due to ducks and other water birds



WIDEN THE PLANTING WINDOW AND EXPAND OPPORTUNITIES



- ① Tapered bearings in disc hub
- ② Fully adjustable closing wheel pressure
- ③ Cast closing wheel for excellent furrow closing
- ④ Seed firming wheel for excellent seed to soil contact
- ⑤ Easily adjustable, low maintenance depth adjustment
- ⑥ Hard-faced planting shoe for long life



- ⑦ Bolts onto 4" x4" bar (100 mm x 100 mm)
- ⑧ Heavy duty downforce spring
- ⑨ Optional d-cup diffuser
- ⑩ Simple adjustments to suit all soil types and conditions
- ⑪ 18 inch single-bevelled disc opener at 7° angle
- ⑫ Slotted gauge wheel for wet, sticky conditions
- ⑬ Gauge wheel fitted with ring mud scraper

FRAME TYPES



Fully-mounted 3PT linkage

- Economical
- Options e.g. Gauge Wheels and folding toolbar
- Single bar or dual
- Widths 8m – 12m (26ft – 40ft)



Drawbar or linkage mounted with fixed rear carrier wheels

- Less weight on linkage
- Can mount Airseeder on rear frame
- Heavy duty tyres
- Compact and manoeuvrable
- Rotating bars
- Width 4.5m – 12m (15.5ft – 40ft)
- Narrow transport widths available 3m – 3.5m (10ft – 11.5ft)



Trailing Frame

- Excellent ground-following
- Fixed and/or Rotating bars
- Widths 8m – 24m (26ft – 79ft)
- Narrow transport widths available
- 2, 3 or 4 bar frames
- High lift for ease of maintenance
- High lift or fixed wheel option

CUSTOMER TESTIMONIAL

Randall Boughton Gilroy Farms

Location: Moree, NSW
Operation Size: 2,500ha

Crops: Barley, wheat, sorghum, chickpeas
Annual rainfall: 510mm



Randall Boughton and his son Ben find their single disc Excel Stubble Warrior essential to their controlled traffic farming operation at Gilroy farms, and leased property Allendale in Moree, NSW.

Having run controlled traffic for 12 years, the Boughtons are now operating their second Stubble Warrior, the first being a three-point linkage machine.

The current 12m trailing unit has now completed three seasons, and the extra downforce from the increased frame weight has proven to be an advantage over the previous unit.

Using 333mm spacings, alternating crops are inter-row planted. The Boughtons have also planted chickpeas at 666mm spacings by lifting up the front row of disc units, but have found better yields by reverting to 333mm for all crops.

Travel speed is 10–11 km/h, which Randall believes is the sweet spot for his machine on the black clay, self-mulching soils. Drawn by a New Holland T8.436 FWA tractor with rear tracks (324kW), fuel consumption is 3L/ha.

When Kondinin Group visited Randall and Ben, they were sowing chickpeas into stubble from a 4t/ha barley crop. Stubble handling has never been a problem for the Excel, except in the centre of the machine where their harvester leaves too much residue. Here the discs can struggle to cut through the straw, leading to some hairpinning.

Much of the sowing is performed dry, as chasing moisture by going deeper tends to waste fuel and overtax the machinery. In wet conditions, sowing only commences once the surface has a dry crust, otherwise mud on the discs causes issues with the sowing boots, and picks up straw.

Lack of contour following is an issue, especially as the units are not mounted on parallelograms, with the discs dropping into wheeltracks and losing downforce, although this has been somewhat mitigated with the use of the tracked tractor.

Randall rates the seed placement as very good, although admits it would be possibly better with a double disc machine. He says the placement of the seed to the side of the trench helps it emerge up the trench wall if the furrow has been packed down and set hard.

The firming wheel was highly regarded, but the downforce spring was disengaged in moist conditions, using its weight as pressure only to avoid flicking the seed out of the trench. Randall says the adjustment of the closing wheel is critical, as if it is positioned too far to the side of the trench in dryer conditions, it will not close the slot effectively.

The Excel is also used each season to incorporate some urea prior to planting, so the machine actually ends up covering about 3200ha each year. While the rear discs have just been replaced (\$60), the front discs are still original, having done less hectares (when planting at 666mm spacings). Boots (\$60) are replaced at the same time as discs.

The Boughtons have never had to replace a bearing on their machine, and are conscientious with their maintenance, greasing the units every day or two.

Farming Ahead, No. 077
June 2016, p.38
www.farmingahead.com.au

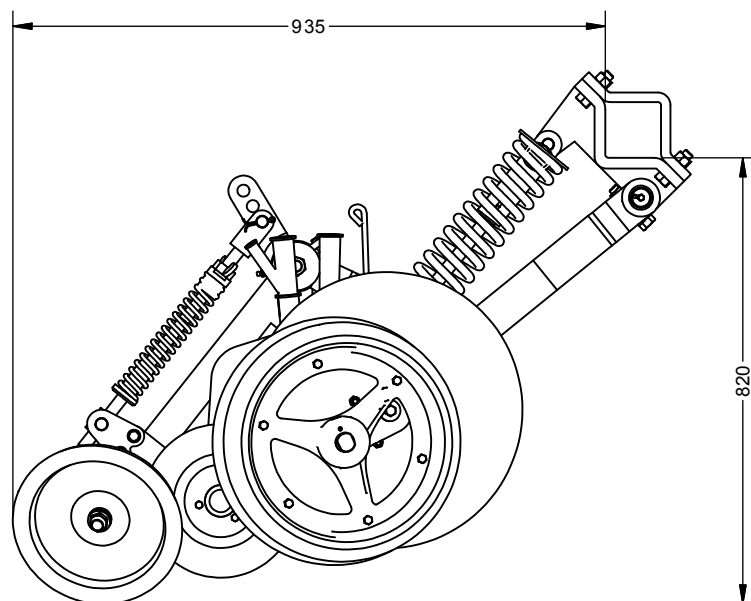
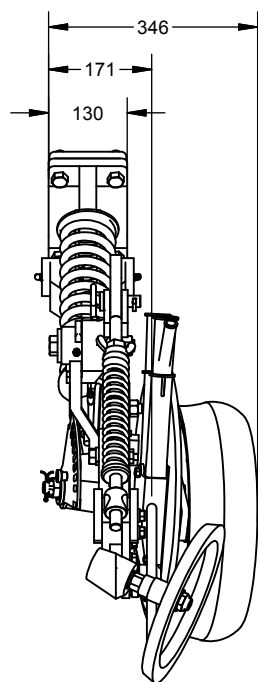


CONVERT YOUR EXISTING MACHINE

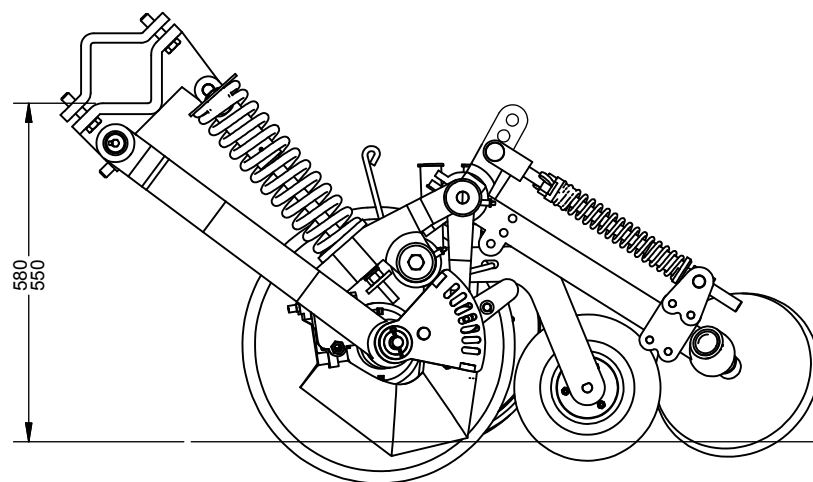
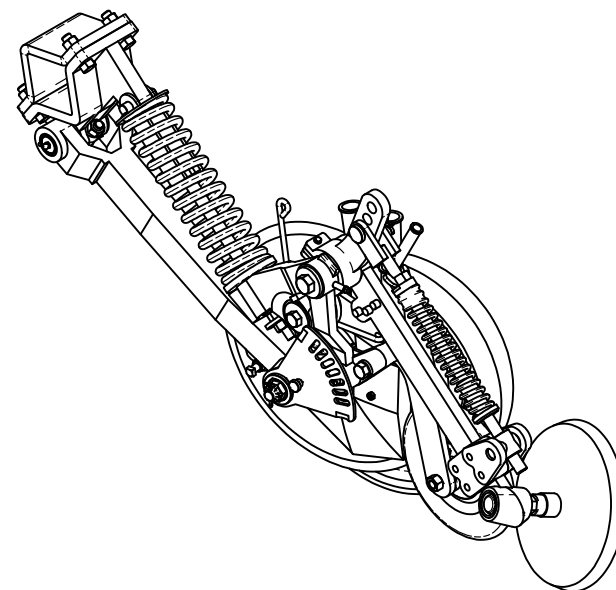
- Bolts straight onto 100mm x 100mm bar (4" x 4")
- All the benefits of a new disc machine without the capital outlay
- Save money by using your existing machine
- Can be adapted to suit most existing bars
- Avoids the need to learn how to use a new machine



SINGLE DISC ROW UNIT - SERIES III



Row Unit in Lifted Position



Unit in Working Position

Depth Setting = 10 to 80 mm
 Spring Downforce = 150 to 565 kg
 Disc dimensions = $\varnothing 18"$ x 6 mm thick
 Seed Tube inner diameter = 32 mm (1.25")
 Gauge Wheel dimensions = $\varnothing 381$ mm x 114 mm ($\varnothing 15"$ x 4.5")

Farming for the Future

Excel Agriculture stands behind its products. We offer service support nationwide, to keep your equipment running efficiently.

The Excel team consists of fully-trained, experienced people who have been around the product range since the onset of the design conception.

We carry a comprehensive range of spare parts with stock in various locations as we understand the importance of ongoing support and peace of mind for your Excel equipment.

OTHER PRODUCTS

- Broadacre Equipment
- Inter row cultivator
- Fertiliser rig
- Side busters / centre busters
- Cultipackers
- Airseeders
- Belt Spreader
- Manure Spreader

Excel Agriculture, a family owned company with traditional family business values.

We believe in the values of service, quality and trust.



EXCEL
Agriculture

www.excelagr.com.au

P.O. Box 665
74 – 92 Buckland Street
Toowoomba Qld 4350

Ph: (07) 4636 9100
Fax: (07) 4636 9140

Great Western Corporation Pty Ltd ABN 91 064 434 475

Gyral
60 YEARS

www.gyral.com.au